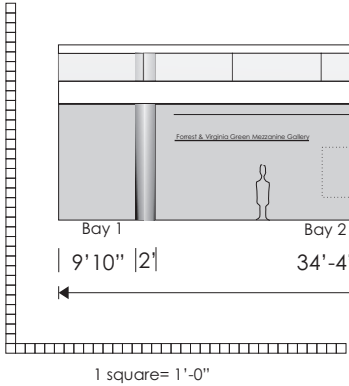
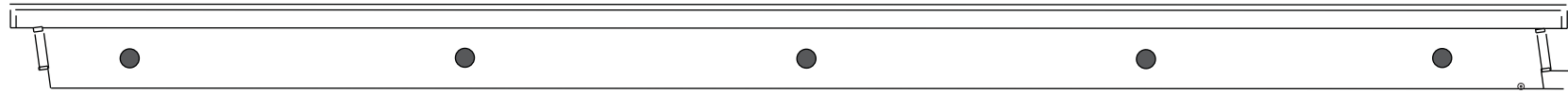


Revision
09

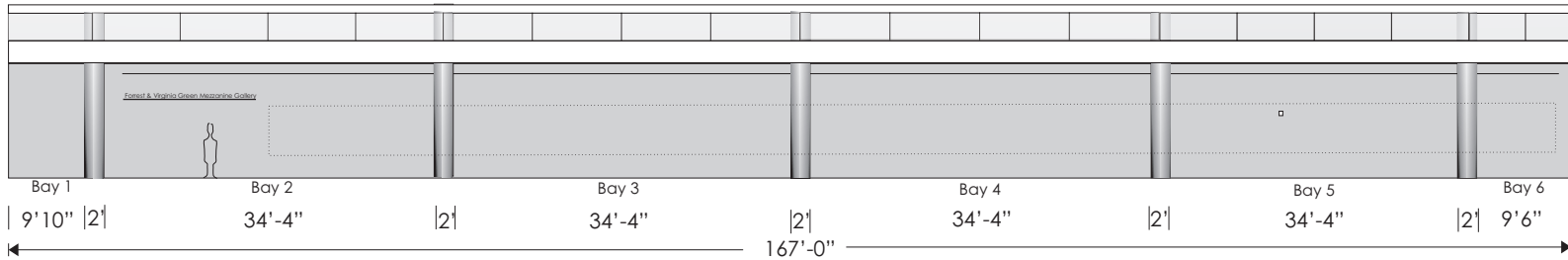
CHARLES W. EISEMANN CENTER
FOR PERFORMING ARTS AND CORPORATE PRESENTATIONS
2351 Performance Drive, Richardson, TX, 75082 972/744-4600
GREEN MEZZANINE GALLERY

Gallery Hours:
Mon - Sat
10 am - 6 pm
and during anytime
the building is open
for events.
Exhibitions change
each month

Wall plan view

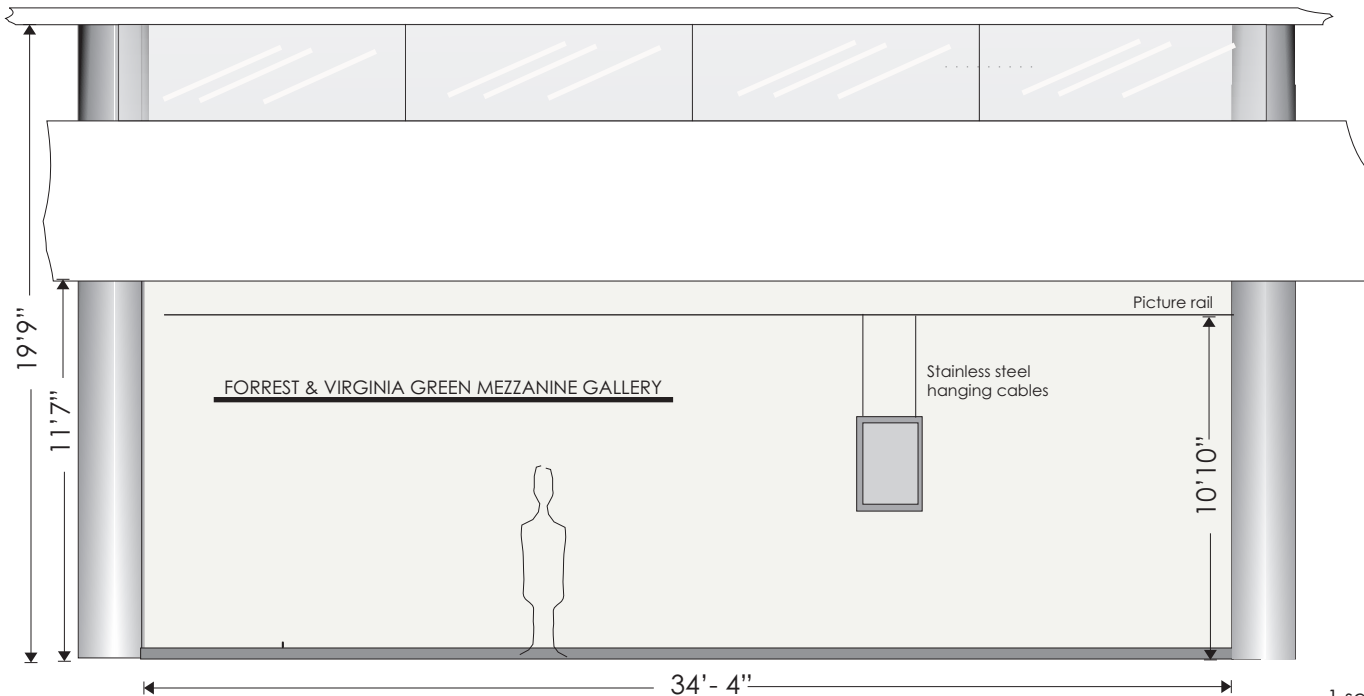


West Wall Elevation



Total wall Space = 2,111 sq. ft. or 182.5 liner feet
Exhibit Space is defined as the useable wall space 2.5 ft from the floor up to 7.5 ft.
Bay 1 = 0 sq. ft. Bay 5 = 170 sq. ft. (as indicated by the dotted line)
Bay 2 = 95 sq. ft. Bay 6 = 45 sq. ft.
Bay 3 = 170 sq. ft. Bay 7 = 75 sq. ft.
Bay 4 = 170 sq. ft. Total exhibit space is 725 sq. ft
or 142 liner feet of wall space

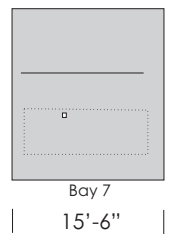
Detail elevation



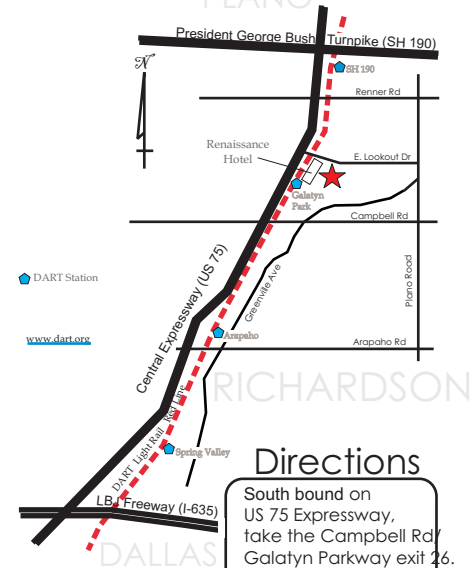
Section



North Wall



LOCATION MAP



Directions

South bound on US 75 Expressway, take the Campbell Rd/ Galatyn Parkway exit 26. Turn left onto overpass that becomes Galatyn Parkway, then left on Performance Drive.
North bound on US 75 Expressway, take the Renner Rd/ Galatyn Parkway exit 27A. Turn right onto Galatyn Parkway, then left on Performance Drive.